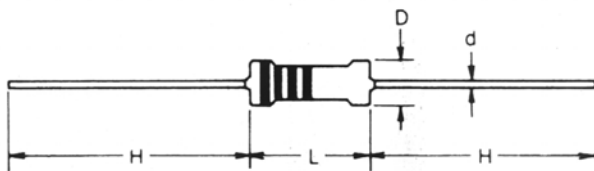


**METAL FILM FIXED RESISTORS**

**SMALL SIZE TYPE**

Standard = E-96 / Tol. 1% / other Ohm & Tol. - Values on request / RoHS – compliant = 100% Pb-Free

Specifications Power Rating / T. coeff.		Dimension (mm)				Working Voltage	Overload Voltage		Withstanding Voltage	Ω	Tape Box
P at 70°C T.C.R. ppm	Type F = 1% C = 0,25% B = 0,1%	D max.	L max.	d + 0,02 - 0,05	H ± 3	max. Vac	max. Vdc	Vac	Vac		pcs.
0,25 W / 50	MFR 025 F	1,85	3,5	0,5	28	200	400	400	500	1 – 10 M	1 000
0,40 W / 50	MFR 040 F	1,9	3,7	0,5	28	200	400	400	200	10 – 2,2 M	1 000
0,40 W / 15	MFR 040 C	1,9	3,7	0,5	28	200	400	400	200	51,1 – 200 k	1 000
0,60 W / 50	MFR 060 F	2,5	6,8	0,6	28	350	700	700	400	1 – 10 M	1 000
0,60 W / 15	MFR 060 B	2,5	6,8	0,6	28	350	700	700	400	100 – 100 k	1 000
1,0 W / 50	MFR 100 F	5	12	0,7	28	500	1 000	1 000	1 000	51,1 – 1 M	500
1,0 W / 15	MFR 100 B	5	12	0,7	28	500	1 000	1 000	1 000	100 – 330 k	500
2,0 W / 50	MFR 200 F	5,5	16	0,8	28	500	1 000	1 000	1 000	51,1 – 1 M	500
2,0 W / 15	MFR 200 B	5,5	16	0,8	28	500	1 000	1 000	1 000	100 – 330 k	500
3,0 W / 50	MFR 300 F	6,5	17,5	0,8	28	500	1 000	1 000	1 000	51,1 – 1M	500
3,0 W / 15	MFR 300 B	6,5	17,5	0,8	28	500	1 000	1 000	1 000	100 – 330 k	500

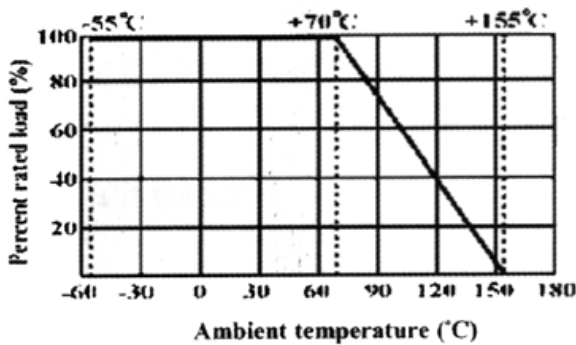


Bodycolour  
 Körperfarbe  
 Couleurs  
 Colori

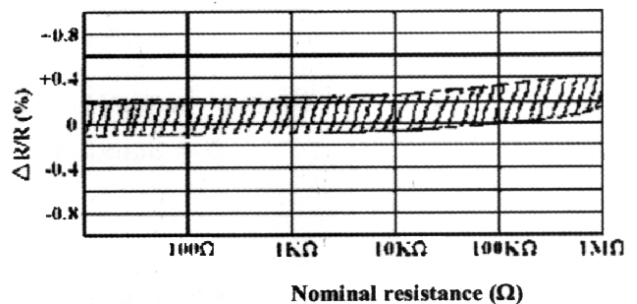
RAL 6018 – YELLOW-GREEN



**Derating Curve:**

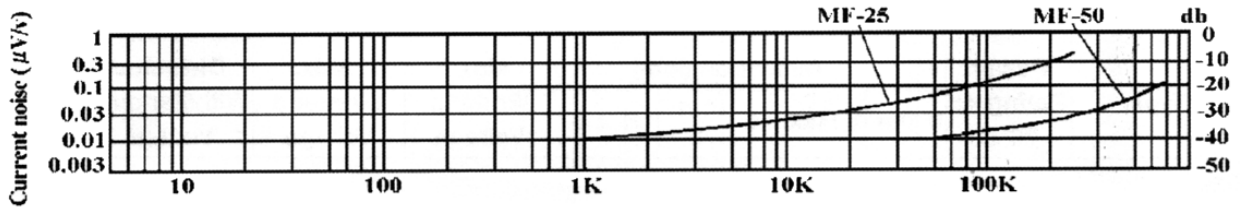


**Load Life:**



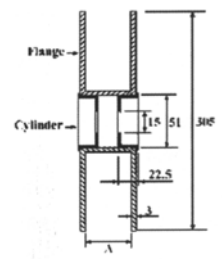
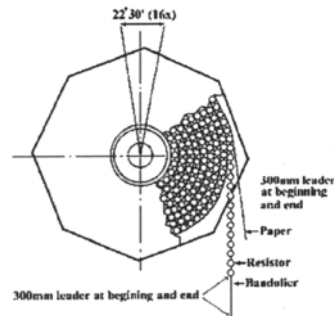
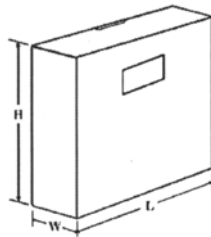
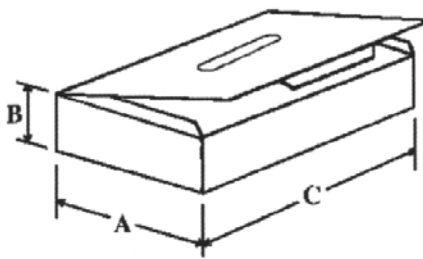
# METAL FILM FIXED RESISTORS

## Current Noise Level:



## Performance Specifications

<p>Temperature coefficient</p> <p>Short-time overload</p> <p>Dielectric withstanding voltage</p> <p>Pulse overload</p> <p>Terminal strength</p> <p>Resistance to Soldering heat</p> <p>Solder ability</p> <p>Resistance to solvent</p> <p>Temperature cycling</p> <p>Load life in humidity</p> <p>Load life</p>	<p>Within the maximum temperature coefficient specified in page 1 ( T.C.R. )</p> <p><math>\Delta R / R \leq \pm ( 0.5\% + 0.05\Omega )</math>, with no evidence of mechanical damage.</p> <p>No evidence of flashover, mechanical damage, arcing or insulation breakdown.</p> <p><math>\Delta R / R \leq \pm ( 1\% + 0.05\Omega )</math>, with no evidence of mechanical damage.</p> <p>No evidence of mechanical damage.</p> <p><math>\Delta R / R \leq \pm ( 1\% + 0.05\Omega )</math>, with no evidence of mechanical damage.</p> <p>Min. 95% coverage.</p> <p>No deterioration of protective coating and markings.</p> <p><math>\Delta R / R \leq \pm ( 1\% + 0.05\Omega )</math>, with no evidence of mechanical damage.</p> <p><math>\Delta R / R \leq \pm 5\%</math></p> <p><math>\Delta R / R \leq \pm 5\%</math></p>
---	---



TYPE	A	B	C	Quantity	TYPE	W ±5	H ±5	L ±5	A	Quantity
MFR 025	75	25	255	1 000	MFR 025	85	295	290	73	5 000
MFR 040	75	25	255	1 000	MFR 040	85	295	290	73	2 500
MFR 060	75	45	255	1 000	MFR 060	85	295	290	73	2 000
MFR 100				500	MFR 100					1 000
MFR 200				500	MFR 200					
MFR 300				500	MFR 300					