

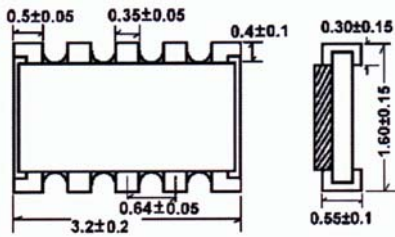
Type	Performance Specifications	Dimension (mm)	Equivalent Circuit Diagram
2D02 2X 0402	Rated power @ 70°C 1 / 16 W Max. working voltage 25 V Max. overload voltage 50 V Dielectric withstanding voltage 500 V Resistance range 5% (E24) 10Ω .. 1 MΩ Temperature coefficient ± 200 ppm / °C Operating temperature range -55°C .. +125°C Jumper Rated Current --- RoHS - compliant / 100% Pb - free		
4D02 4X 0402	Rated power @ 70°C 1 / 16 W Max. working voltage 25 V Max. overload voltage 50 V Dielectric withstanding voltage 500 V Resistance range 5% (E24) 10Ω .. 1 MΩ Temperature coefficient ± 200 ppm / °C Operating temperature range -55°C .. +125°C Jumper Rated Current --- RoHS - compliant / 100% Pb - free		
4D03 4X 0603	Rated power @ 70°C 1 / 16 W Max. working voltage 25 V Max. overload voltage 50 V Dielectric withstanding voltage 500 V Resistance range 5% (E24) 10Ω .. 1 MΩ 1% (E96) 100 .. 560 kΩ Temperature coefficient 5% 10 .. 1MΩ ≤ ±400ppm/°C 1% 100 .. 560 kΩ ≤ ± 200 ppm / °C Operating temperature range -55°C .. +125°C Jumper Rated Current 1 A RoHS - compliant / 100% Pb - free		
16P8 8 x R 16 PIN	Rated power @ 70°C 1 / 16 W Max. working voltage 25 V Max. overload voltage 50 V Dielectric withstanding voltage 500 V Resistance range 5% (E24) 10Ω .. 1 MΩ Temperature coefficient ± 200 ppm / °C Operating temperature range -55°C .. +125°C Jumper Rated Current --- RoHS - compliant / 100% Pb - free		

Performance Specifications

Short time overload	±(2.0% +0.1Ω) Max.
Insulation resistance	≥1,000 Mega Ohm.
Dielectric withstanding voltage	No evidence of flashover, mechanical damage, arcing or insulation breakdown.
Terminal bending	±(1.0% +0.05Ω) Max
Soldering heat	Resistance change rate is ±(1.0% +0.05Ω) Max.
Solderability	Min. 95% coverage.
Temperature cycling	ΔR/R ≤ ±(1.0% +0.05Ω)
Load life in humidity	±(3.0% +0.1Ω) Max.
Load life	±(3.0% +0.1Ω) Max.

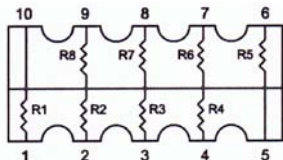
Dimension (mm) & Equivalent Circuit Diagram

Feature RoHS - compliant / 100% Pb - free

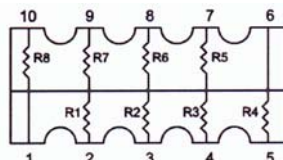


Rated Power @ 70°C 1 / 32 W (special code "WH" in Part. No.)
 Max. Working Voltage 25 V
 Max. Overload Voltage 50 V
 Dielectric Withstanding Voltage 50 V
 Operating Temperature Range -55°C ... + 125°C
 Resistance Range 5% (E-24 series) 33 ... 100 kΩ

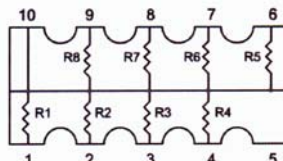
Temperature Coefficient ± 200 ppm / °C
 Short Time Overload ± (2.0% + 0.05 Ω) max.
 Insulation Resistance ≥ 1 000 Mega Ohm
 Dielectric Withstanding Voltage No evidence of flashover, mechanical damage, arcing or insulation breakdown.
 Terminal Bending ± (1.0% + 0.05 Ω) max.
 Soldering Heat Resistance change rate is ± (1.0% + 0.05 Ω) max.
 Solderability Min. 95% coverage
 Load Life in Humidity ± (3.0% + 0.1 Ω) max.
 Load Life ± (3.0% + 0.1 Ω) max.



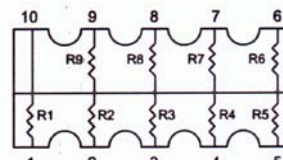
R1=R2=R3=R4=R5=R6=R7=R8
10P8 (P Type)



R1=R2=R3=R4=R5=R6=R7=R8
10S8 (S Type)

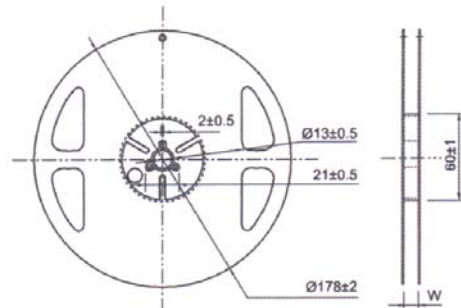


R1=R2=R3=R4=R5=R6=R7=R8
10T8 (T Type)

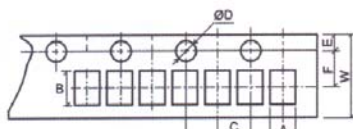


R1=R2=R3=R4=R5=R6=R7=R8=R9
10E9 (E Type)

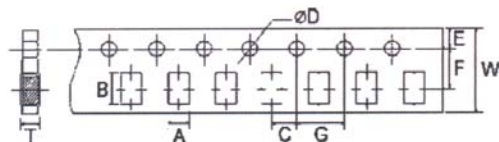
Dimension of Reel (mm)



TYPE	Taping	Qty. / Reel	Tape Width	W ± 1
2D02	Paper	10,000pcs	8mm	10
4D02	Paper	10,000pcs	8mm	10
4D03	Paper	5,000pcs	8mm	10
10P8	Paper	5,000pcs	8mm	10



0402 4D02 2D02



4D03 0603 0805 1206 1210 10P8

TYPE	A±0.2	B±0.2	C±0.05	∅ D ^{+0.1} / _{-n}	E±0.1	F±0.05	G±0.1	W±0.2	T±0.1
2D02	1.20	1.20	2.0	1.5	1.75	3.5	4.0	8.0	0.45
4D02	1.20	2.20	2.0	1.5	1.75	3.5	4.0	8.0	0.70
4D03	2.00	3.60	2.0	1.5	1.75	3.5	4.0	8.0	0.83
10P8	2.00	3.60	2.0	1.5	1.75	3.5	4.0	8.0	0.85